



DW[®] IP FINDER™ INSTALLATION AND USER GUIDE

IP Finder Ver 4.4.23 Total Devices : 47

Network: Ethernet 2 [192.168.0.58]

Devices: All
 [Scan Devices](#)

Thumbnail
 [Refresh Thumbnail](#)

[Bulk IP Assignment](#)
 [Bulk Codec Assignment](#)
 [Bulk Date&Time Assignment](#)
 [Bulk Password Assignment](#)
 [FW Upgrade](#)

Common Camera Account
 admin [Log out](#)

DW DIGITAL WATCHDOG
Complete Surveillance Solutions

Name	IP Address	Model	MAC Address	Netmask	Gateway	Port	DHCP	Version	Ping Test	Settings	Serial Number
DWC-MTT4WA	192.168.0.31	DWC-MTT4WA	00:0F:3A:AD:42:D3	255.255.255.0	192.168.0.1	80	-	-	Ping	Click	N/A
DWC-MV74W4	192.168.0.34	DWC-MV74W4	00:0D:F1:21:42:88	255.255.255.0	192.168.0.1	80	Enabled	A2.01.02_20180619	Ping	Click	N/A
DWC-MV82DVT	192.168.0.80	DWC-MV82DVT	00:0D:F1:2B:C0:ED	255.255.255.0	192.168.0.1	80	Enabled	A8.02.01_20230823	Ping	Click	N/A
DWC-MV85WAT	192.168.0.86	DWC-MV85WAT	00:0D:F1:2C:74:4F	255.255.255.0	192.168.0.1	8086	Disabled	A6.02.03_20230823	Ping	Click	N/A
DWC-MV94W2BT	192.168.0.73	DWC-MV94W2BT	00:18:AE:BA:1A:50	255.255.255.0	192.168.0.1	80	-	-	Ping	Click	N/A
DWC-MV95WATW	192.168.0.15	DWC-MV95WATW	00:18:AE:BF:7F:2C	255.255.255.0	192.168.0.1	80	Enabled	5.1.2.0(54839)	Ping	Click	N/A
DWC-MVA5WAT	192.168.0.78	DWC-MVA5WAT	00:0D:F1:21:86:76	255.255.255.0	192.168.0.1	80	Enabled	A13.02.03_20230823	Ping	Click	N/A
DWC-PDS10W2BA	192.168.0.52	DWC-PDS10W2BA	A8:DC:5A:00:A6:E5	255.255.255.0	192.168.0.1	8022	Enabled	A15.03.03_20230906	Ping	Click	N/A
DWC-PPV9D2TW	192.168.0.51	DWC-PPV9D2TW	00:0D:F1:2F:5F:77	255.255.255.0	192.168.0.1	80	Enabled	A10.02.03_20230901	Ping	Click	Login Failed
DWC-PPV9D2TW	192.168.0.57	DWC-PPV9D2TW	00:0D:F1:2F:5F:84	255.255.255.0	192.168.0.1	80	Enabled	A10.02.03_20230901	Ping	Click	N/A
DWC-PZ21M69TW	192.168.0.56	DWC-PZ21M69TW	A8:DC:5A:01:1A:F0	255.255.255.0	192.168.0.1	80	Enabled	P2.02.01_20210406	Ping	Click	N/A
DWC-VSBD04HI	192.168.0.41	DWC-VSBD04HI	A8:DC:5A:A0:1A:C9	255.255.255.0	192.168.0.1	80	-	-	Ping	Click	N/A
DWC-VSDG04HI	192.168.0.69	DWC-VSDG04HI	A8:DC:5A:A0:01:C1	255.255.255.0	192.168.0.1	80	Enabled	5.1.1.0(42219)	Ping	Click	N/A
DWC-VSTB04HI	192.168.0.81	DWC-VSTB04HI	A8:DC:5A:A0:0C:0F	255.255.255.0	192.168.0.1	80	Enabled	5.1.1.0(46866)	Ping	Click	N/A
DWC-XPZ03HI	192.168.0.53	DWC-XPZ03HI	00:1C:63:D4:89:82	255.255.255.0	192.168.0.1	80	Enabled	V13.403803_T857	Ping	Click	N/A
DWC-XSBA08HI	192.168.0.63	DWC-XSBA08HI	A8:DC:5A:00:C4:8E	255.255.255.0	192.168.0.1	80	Enabled	A15.03.03_20240123	Ping	Click	EMPTY
DWC-XSBE09HI	192.168.0.82	DWC-XSBE09HI	A8:DC:5A:01:75:7E	255.255.255.0	192.168.0.1	80	Enabled	A20.03.03_20240123	Ping	Click	2402150058
DWC-XSDE08HI	192.168.0.74	DWC-XSDE08HI	A8:DC:5A:01:61:31	255.255.255.0	192.168.0.1	80	Enabled	A15.03.03_20240430	Ping	Click	EMPTY

Rev: 08/24 v4.4.22

Copyright © Digital Watchdog. All rights reserved.
Specifications and pricing are subject to change without notice.



IP Finder Setup Guide

Table of Contents

System Requirements	3
Initial Set Up	4
GUI Overview	5
Left Navigation Bar	5
Top Navigation Bar	5
Bulk IP Assignment	7
Bulk Codec Assignment	8
Bulk Date & Time Assignment	9
Bulk Password Assignment	10
Camera Settings	11
Functionality Comparison – Windows vs. Linux	12
Windows OS.....	12
Linux OS.....	13



IP Finder Setup Guide

System Requirements

Linux Ubuntu System Requirements:

- OS Supported: Ubuntu 16.04, 18.04 and 20.04
- OS Supported: Ubuntu 16.04, 18.04 and 20.04

Linux Ubuntu Supported Devices:

- DW MEGApix IP cameras using firmware versions beginning with “A” or “S” (i.e., A6.2.x, A7.2.x, A8.2.x, etc.)
- DWC-MBT4Wi28, DWC-MBT4Wi36, DWC-MTT4Wi28, DWC-MTT4Wi36, DWC-MTT4Wi6, DWC-MTT4WiA, DWC-MVT4Wi28, DWC-MVT4Wi36, DWC-MVT4Wi6, DWC-MVT4WiA, DWC-MB94Wi28T, DWC-MB94Wi36T, DWC-MT94Wi28T, DWC-MT94Wi36T, DWC-MT94Wi6T, DWC-MT94WiAT, DWC-MV94Wi28T, DWC-MV94Wi36T, DWC-MV94Wi6T, DWC-MV94WiAT

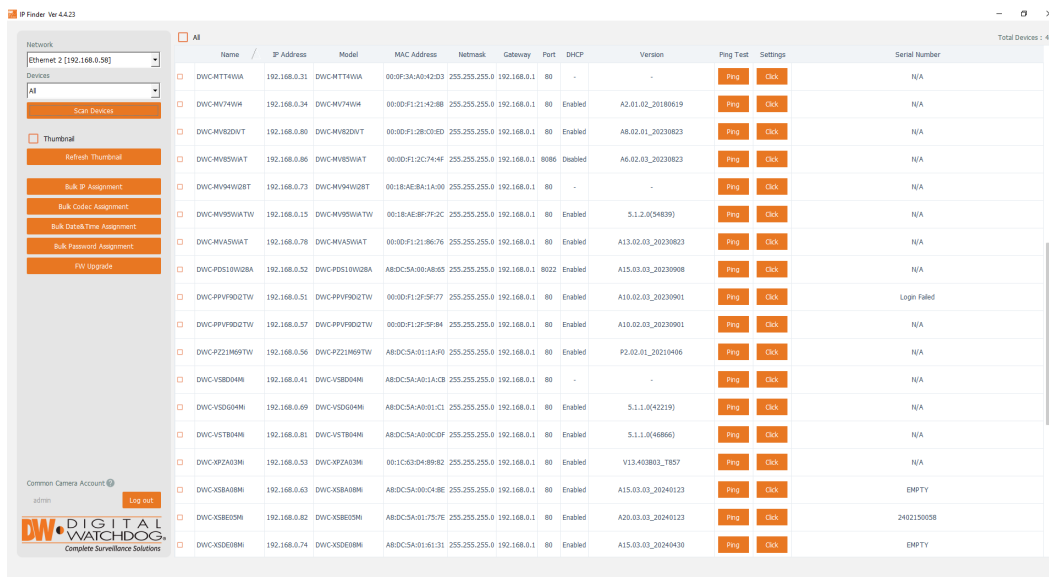
***NOTE:** DW IP Finder can discover DW cameras that are not included in the list above, but they are not fully supported at the moment.



IP Finder Setup Guide

Initial Set Up

1. Download and install the latest version of the IP Finder. When the installation is done, open the IP Finder.
2. Select the network you want to scan for supported devices.
3. Click 'Scan Devices' to scan the selected network for all supported devices. Results will be shown in the table. During the scan, the DW® logo will turn gray. You can filter the results using the options in the drop-down menu on the left.
4. Supported cameras can provide a thumbnail image of the camera's view. Users can turn it on or off and refresh the thumbnail image as needed.



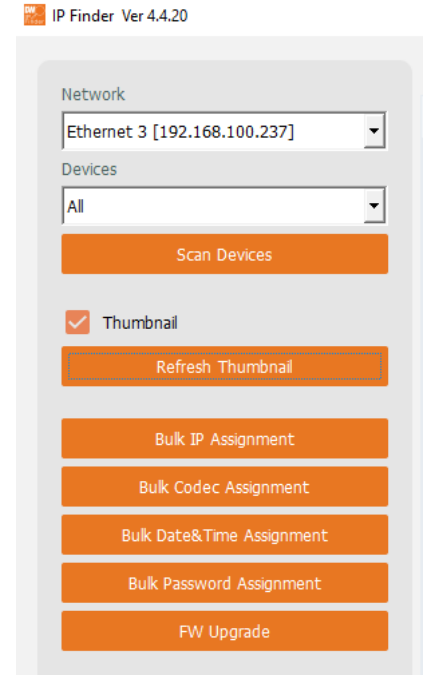
5. On supported models, Admin users can assign IP addresses, codecs, dates/times and passwords to multiple cameras using the bulk assign buttons on the left panel.
6. When connecting to a camera for the first time, a password must be set.
 - a. Select the camera and enter the settings window.
 - b. Enter admin/admin for the current username and password. Enter a new username and password to the right. Passwords must have a minimum of eight (8) characters and at least four (4) combinations of uppercase and lowercase letters, numbers and special characters. Passwords cannot contain the user ID.
 - c. Click "change" to apply all changes.
7. Admin users can adjust a camera's network settings by double-clicking on a camera's name or clicking on the 'Click' button to open the settings window. Cameras are set to DHCP by default.
8. To access the camera's web page, click on the 'Website' button.

9. To save changes made to the camera's settings, enter the username and password of the camera's admin account and click 'Apply.'

GUI Overview

Left Navigation Bar

- Network: Select which network to scan.
- Devices: Select which devices to scan for in the selected network.
- Scan Devices: Press the button to scan the selected network for the selected devices.
- Thumbnail: Show or hide the camera's preview (on supported models).
- Refresh Thumbnail: Refresh the camera preview images (on supported models).
- Bulk IP Assignment: Assign new IP addresses for the selected cameras (on supported models).
- Bulk Codec Assignment: Assign the codec for all selected cameras (on supported models).
- Bulk Date & Time Assignment: Set the date and time for all selected cameras (on supported models).
- Bulk Password Assignment: Change the admin's password for all selected cameras (on supported models).
- FW Upgrade: Perform a firmware upgrade to all selected cameras (on supported models).



Top Navigation Bar

The top navigation bar shows all the relevant information for cameras. Each column can be selected as the main sort category by clicking on the small arrow next to the column's name.

- All: Check the selection boxes next to all the cameras in the results or check the box next to each camera.
- Thumbnail: View a still frame from the camera's view.
- Name: This shows the camera's name. It can be adjusted in the camera's settings in the web GUI or under the settings menu of the IP Finder.



IP Finder Setup Guide

- **IP Address:** This shows the camera's current IP address. It can be adjusted in the camera's settings in the web GUI or under the settings menu of the IP Finder.
- **Model:** On supported models, this shows the camera's DW model name.
- **MAC Address:** Shows the camera's MAC address.
- **Netmask:** Shows the camera's netmask address. This can be adjusted in the camera's settings in the web GUI or under the settings menu of the IP Finder.
- **Gateway:** This shows the camera's gateway address. It can be adjusted in the camera's settings in the web GUI or under the settings menu of the IP Finder.
- **Port:** This shows the camera's web port. It can be adjusted in the camera's settings in the web GUI or under the settings menu of the IP Finder.
- **DHCP:** Shows whether the camera's DHCP settings are on or off. This can be adjusted in the camera's settings in the web GUI or under the settings menu of the IP Finder. (on supported models).
- **Version:** Show the version of the firmware currently running on the camera. (on supported models)
- **Ping Test:** Click on the button to perform a quick ping test to confirm connection to the camera.
- **Settings:** open the IP Finder remote settings for the camera. From this menu, users can edit the camera's name, model, network settings and admin password. Users can also reboot the camera or launch the camera's web page for additional settings and options.
- **Serial Number:** on supporter models, users can find the camera's serial number here for future reference.

Name	IP Address	Model	MAC Address	Netmask	Gateway	Port	DHCP	Version	Ping Test	Settings	Serial Number

Bulk IP Assignment

Once users check the box for the cameras they want to edit (on supported models), click the bulk IP assignment to open the window below.

	Name	MAC Address	IP Address	Netmask	Gateway	Port	DHCP	Status
1	DWC-MPTZ336XW	00:07:D8:1D:D2:DB	192.168.100.40	255.255.255.0	192.168.100.1	80	Enabled	
2	DWC-PZ21M69T	00:0D:F1:21:84:6A	192.168.100.224	255.255.255.0	192.168.100.1	80	Disabled	
3	DWC-PVX16W4	00:0D:F1:21:8E:54	192.168.100.161	255.255.255.0	192.168.100.1	80	Enabled	
4	DWC-PVF9D12TW	00:0D:F1:2E:5E:BA	192.168.100.215	255.255.255.0	192.168.100.1	80	Enabled	
5	DWC-MVC8WiATW	00:0D:F1:2F:B0:47	192.168.100.202	255.255.255.0	192.168.100.1	80	Enabled	
6	DWC-MT95WiATW	00:0F:3A:05:29:CD	192.168.100.31	255.255.255.0	192.168.100.1	80	-	
7	DWC-XSBA08Mi	A8:DC:5A:00:C4:70	192.168.100.221	255.255.255.0	192.168.100.1	80	Enabled	

Users can set the IP address range to use for the selected cameras, netmask and gateway.

To apply the changes, enter the admin username and password on the top right.

Click the 'Assign' button.

Users can also reset the selected cameras' network information to factory settings by clicking the button next to 'Factory reset' on the top left and then clicking 'Assign.'

Bulk Codec Assignment

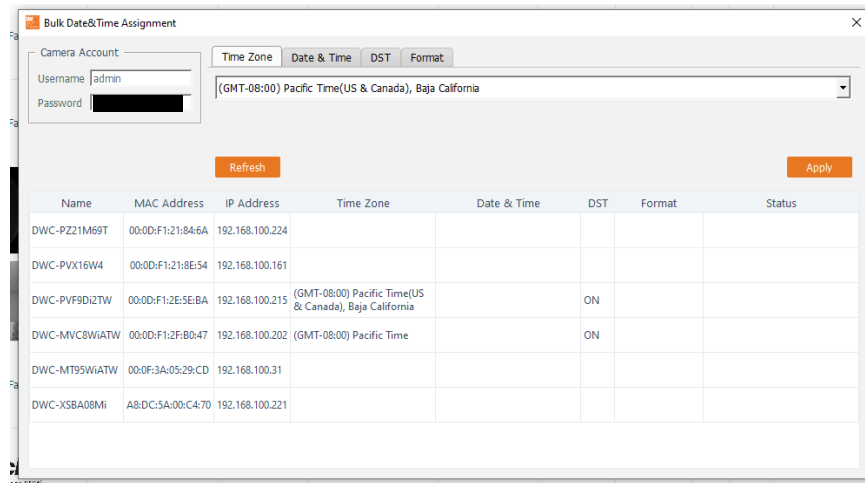
Once users check the box for the cameras they want to edit (on supported models), click the bulk Codec Assignment to open the window below.

Name	MAC Address	IP Address	1st Stream	2nd Stream	Status
DWC-PZ21M69T	00:0D:F1:21:84:6A	192.168.100.224			
DWC-PVX16W4	00:0D:F1:21:8E:54	192.168.100.161	Loading...	Loading...	
DWC-PVF9Di2TW	00:0D:F1:2E:5E:BA	192.168.100.215	H.264	H.264	
DWC-MVC8WiATW	00:0D:F1:2F:B0:47	192.168.100.202	H.265	H.265	
DWC-MT95WiATW	00:0F:3A:05:29:CD	192.168.100.31			
DWC-XSBA08Mi	A8:DC:5A:00:C4:70	192.168.100.221			

1. Enter the admin username and password on the top right.
2. Select which of the camera's streams you want to edit. You can only edit the primary or secondary streams. Select the codec from the drop-down menu. Please note that not all cameras support all available codecs. Consult your camera's manual for more information.
3. Click 'Apply' to save the settings.
4. Click 'Refresh' to reload the streams' status.

Bulk Date & Time Assignment

Once users check the box for the cameras they want to edit (on supported models), click the bulk Date & Time Assignment to open the window below.



1. Enter the camera's admin username and password to make any changes to the selected cameras.
2. Select the time zone from the drop-down options.
3. If needed, manually enter the date and time in the second tab or adjust the DST selection.
4. Users can also select the date and time format as it will be shown on the camera.
5. Click 'Apply' to save the settings.
6. Click 'Refresh' to reload the cameras' date and time settings status.



Bulk Password Assignment

Once users check the box for the cameras they want to edit (on supported models), click the bulk Password Assignment to open the window below.

When connecting to a camera for the first time, a password must be set.

1. Select the camera and enter the settings window.
2. Enter admin/admin for the current username and password. Enter a new username and password to the right. Passwords must have a minimum of eight (8) characters and at least four (4) combinations of uppercase and lowercase letters, numbers and special characters. Passwords cannot contain the user ID.
3. Click “change” to apply all changes.

Camera Settings

The camera's name, network settings, username and password can be accessed from the 'Settings' menu shown below. The window and available options will differ depending on the camera model.

- Camera Name: Shows the camera's name.
- MAC Address: Shows the camera's MAC address.
- DHCP/Static: Select whether the camera's network settings are to be assigned automatically by the server (DHCP) or manually by the system administrator (Static). If DHCP is selected, the router will assign the camera's IP address, netmask, and gateway automatically. If Static is selected, manually enter an IP address, netmask, gateway and DNS information (the DNS field will not be available on V-Class and DWC-Mx9xx series IP cameras). Contact your network administrator for more information.
- Camera Account: Update the camera's admin username and password.
- Restore default configuration (available on V-Class and DWC-Mx9xx series IP cameras only): Press this button to restore the camera to its factory default settings.

- Website: Open the camera's web interface in your default browser to access the camera's full settings.
- Reboot: Power cycles the camera.
- Apply/Cancel: Click 'Apply' to save all settings. Click 'Cancel' to exit the settings menu without saving the changes.



IP Finder Setup Guide

Functionality Comparison – Windows vs. Linux

Windows OS

o: support / x: not support

v4.4.23	V-Class / Mx9x x	Discontinued cameras with old F/W(A1,2)	Most current FW (A6,7,10, 15 etc.)	DWC-XPZA models	VMAX [®] Plus™ Series	SiteWatch™	DW-ENC4K 16
Scan Device	o	o	o	o	o	o	o
Thumbnail	o	o	o	o	x	x	△**
Bulk IP Assignment	o	o	o	o	o	o	x
> Factory reset	o	o	o	o	x	o	x
Bulk Codec Assignment	o	o	o	x	x	x	x
Bulk Date & Time Assignment	o	o	o	o	x	x	x
Bulk Password Assignment	o *default PW or login required	o	o	x	x	x	x
FW Upgrade	o *only Mx9x	o	o	o	x	x	x
*Setting window ↓							
DHCP / Static IP setting	o**	o	o	o	o	o	x
Website	o	o	o	o	o	o	o
Reboot	o	o	o	o	x	o	x
Restore the default camera config	o	x	x	o**	x	o	x
*Information display ↓							
DHCP(column)	o *login required	o	o	o	o	o *login required	x *even when logged in, always display "Enabled"



IP Finder Setup Guide

Version	o *default PW or login required	o	o	o	o	o *login required	x
Serial Number		x	o *login required	x	o	x	x

** DW-ENC4K16 thumbnail view: The thumbnail is available only when ch1 has a camera connected; otherwise, it displays a white image.

**V-Class and Mx9xx cameras DHCP/static IP settings: shows DHCP always without Common Camera Account login.

**DWC-XPZA cameras restore default configuration: PW reset is not supported; only settings are reset.

Linux OS

o: support / x: not support

v4.4.21	V- Class / Mx9xx	Discontinued cameras with old F/W(A1,2)	Most current FW (A6,7,10,15 etc.)	DWC- XPZA models	VMAX® Plus™ Series	SiteWatch™
Scan Device	o	o	o	o	o	o
Thumbnail	o	o	o	o	x	x
Bulk IP Assignment	o	o	o	o	o	o
Bulk Codec Assignment	o	o	o	x	x	x
Bulk Date&Time Assignment	o	o	o	o	x	x
Bulk Password Assignment	o	o	o	x	x	x
FW Upgrade	o	o	o	o	x	x
*Setting window ↓						
DHCP / Static IP setting	o	o	o	△*	o	o
Website	o	o	o	o	o	o
Reboot	o	o	o	o	x	o
Restore the default camera config	o	x	x	o**	x	o

*There is a bug that says "failed" even though it is applied.

**PW reset is not supported; only settings are reset.